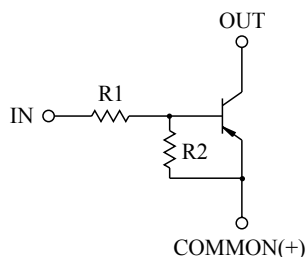


SWITCHING APPLICATION.
INTERFACE CIRCUIT AND DRIVER CIRCUIT APPLICATION.

FEATURES

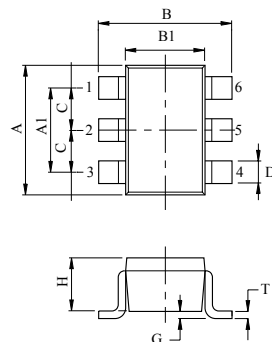
- With Built-in Bias Resistors
- Simplify Circuit Design
- Reduce a Quantity of Parts and Manufacturing Process
- High Packing Density.

EQUIVALENT CIRCUIT



BIAS RESISTOR VALUES

TYPE NO.	R1(k Ω)	R2(k Ω)
KRA757U	10	47
KRA758U	22	47
KRA759U	47	22

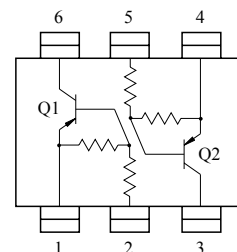


DIM	MILLIMETERS
A	2.00 \pm 0.20
A1	1.3 \pm 0.1
B	2.1 \pm 0.1
B1	1.25 \pm 0.1
C	0.65
D	0.2+0.10/-0.05
G	0-0.1
H	0.9 \pm 0.1
T	0.15+0.1/-0.05

1. Q₁ COMMON (EMITTER)
2. Q₁ IN (BASE)
3. Q₂ OUT (COLLECTOR)
4. Q₂ COMMON (EMITTER)
5. Q₂ IN (BASE)
6. Q₁ OUT (COLLECTOR)

US6

EQUIVALENT CIRCUIT (TOP VIEW)



MAXIMUM RATING (Ta=25°C)

CHARACTERISTIC		SYMBOL	RATING	UNIT
Output Voltage	KRA757U ~ 759U	V _O	-50	V
Input Voltage	KRA757U	V _I	-30, 6	V
	KRA758U		-40, 7	
	KRA759U		-40, 15	
Output Current	KRA757U ~ 759U	I _O	-100	mA
Power Dissipation		P _D *	200	mW
Junction Temperature		T _j	150	°C
Storage Temperature Range		T _{stg}	-55 ~ 150	°C

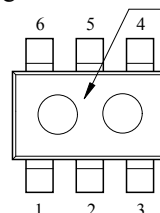
* Total Rating.

MARK SPEC

TYPE	KRA757U	KRA758U	KRA759U
MARK	PH	PI	PJ

Marking

Type Name



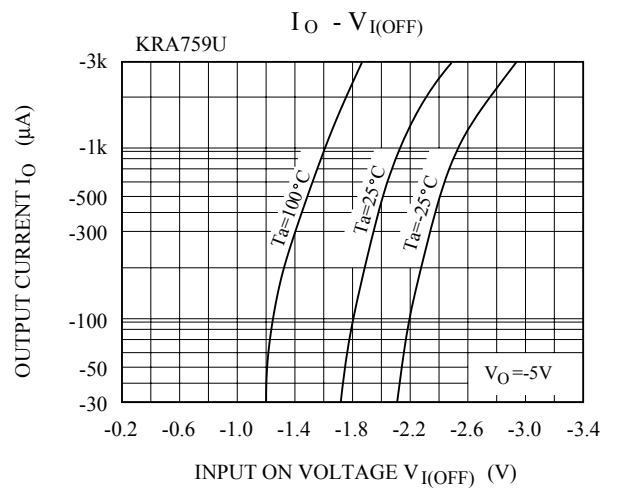
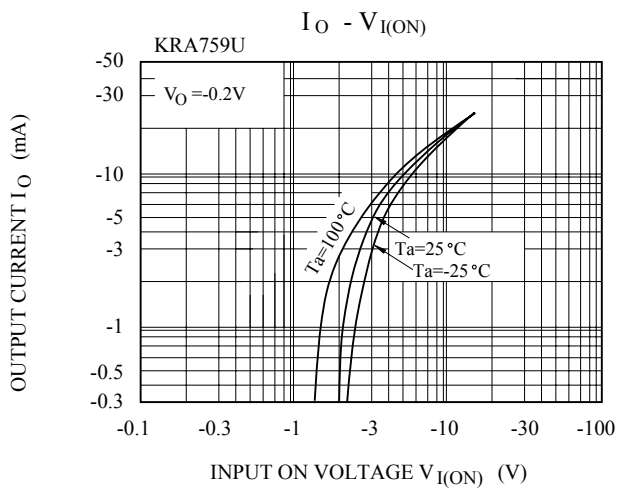
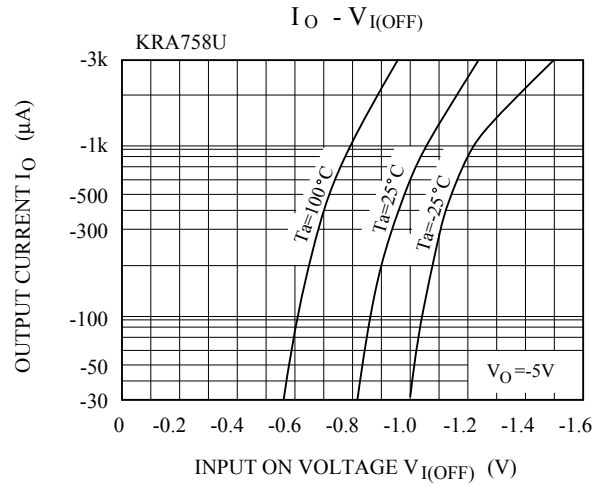
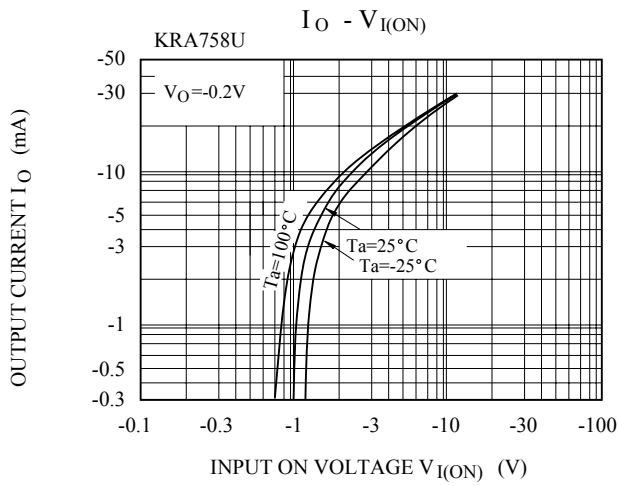
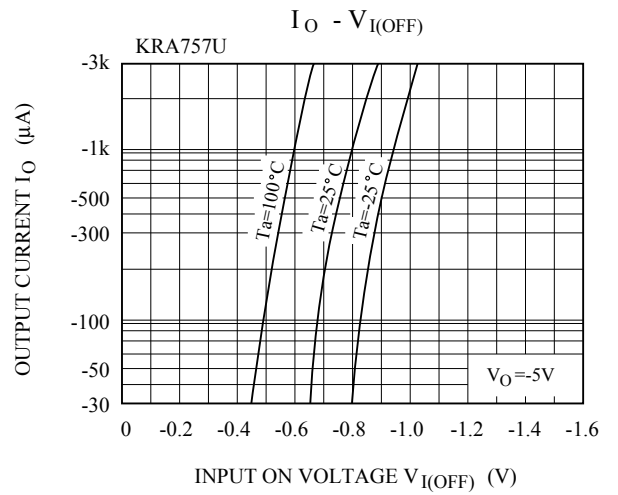
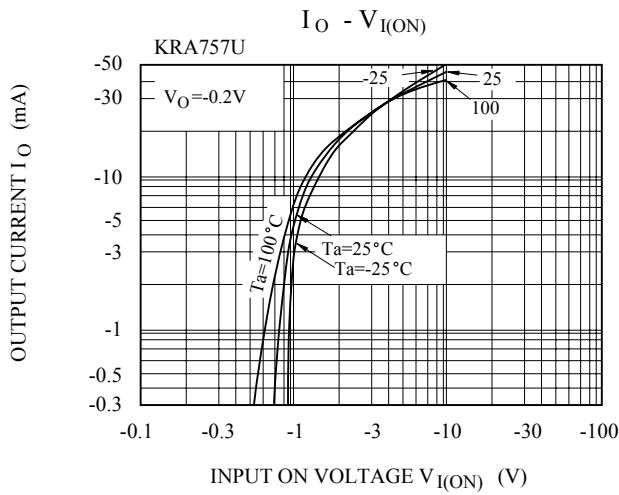
KRA757U~KRA759U

ELECTRICAL CHARACTERISTICS (Ta=25℃)

CHARACTERISTIC		SYMBOL	TEST CONDITION	MIN.	TYP.	MAX.	UNIT		
Output Cut-off Current		KRA757U ~ 759U	I _{O(OFF)}	V _O =-50V, V _I =0	-	-	-500	nA	
DC Current Gain	KRA757U	G _I	V _O =-5V, I _O =-10mA	80	150	-			
	KRA758U			80	150	-			
	KRA759U			70	140	-			
Output Voltage		KRA757U ~ 759U	V _{O(ON)}	I _O =-10mA, I _I =-0.5mA	-	-0.1	-0.3	V	
Input Voltage (ON)	KRA757U	V _{I(ON)}	V _O =-0.2V, I _O =-5mA	-	-1.2	-1.8	V		
	KRA758U			-	-1.8	-2.6			
	KRA759U			-	-3.0	-5.8			
Input Votlage (OFF)	KRA757U	V _{I(OFF)}	V _O =-5V, I _O =-0.1mA	-0.5	-0.75	-	V		
	KRA758U			-0.6	-0.88	-			
	KRA759U			-1.5	-1.82	-			
Transition Frequency		KRA757U ~ 759U	f _T *	V _O =-10V, I _O =-5mA	-	200	-	MHz	
Input Current	KRA757U	I _I	V _I =-5V	-	-	-0.88	mA		
	KRA758U			-	-	-0.36			
	KRA759U			-	-	-0.16			
Switching Time	Rise Time	KRA757U	t _r	V _O =-5V, V _{IN} =-5V R _L =1k Ω	-	0.07	-	μS	
		KRA758U			-	0.20	-		
		KRA759U			-	0.38	-		
	Storage Time	KRA757U			t _{stg}	-	1.1		-
		KRA758U				-	1.3		-
		KRA759U				-	0.7		-
	Fall Time	KRA757U			t _f	-	0.35		-
		KRA758U				-	0.4		-
		KRA759U				-	0.48		-

Note : * Characteristic of Transistor Only.

KRA757U~KRA759U



KRA757U~KRA759U

